

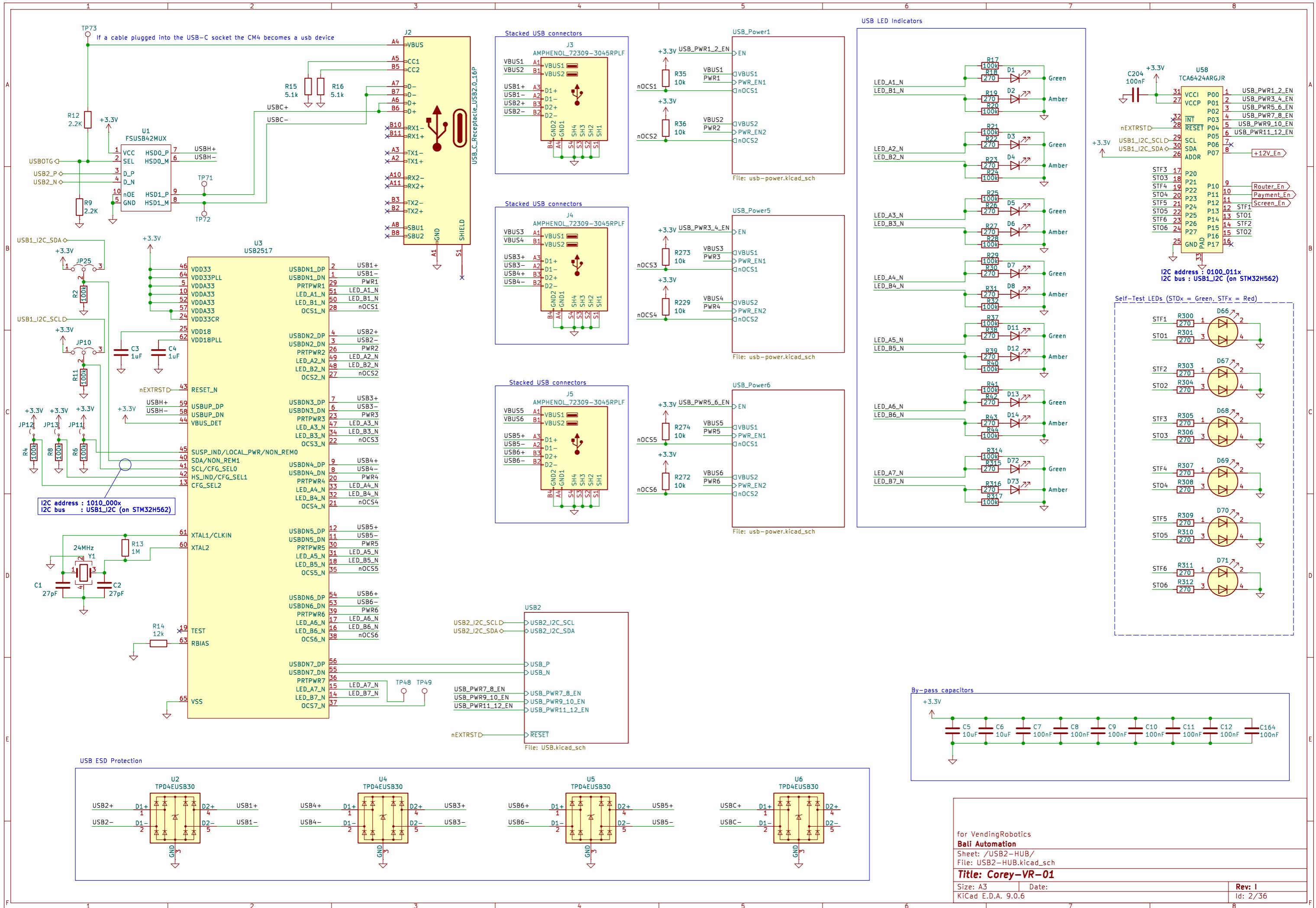
NOTE!!

Pins ID_SD and ID_SC (GPIO0 & GPIO1) are used as GPIO pins, and you must prevent the firmware from checking to see if there is a HAT EEPROM available.

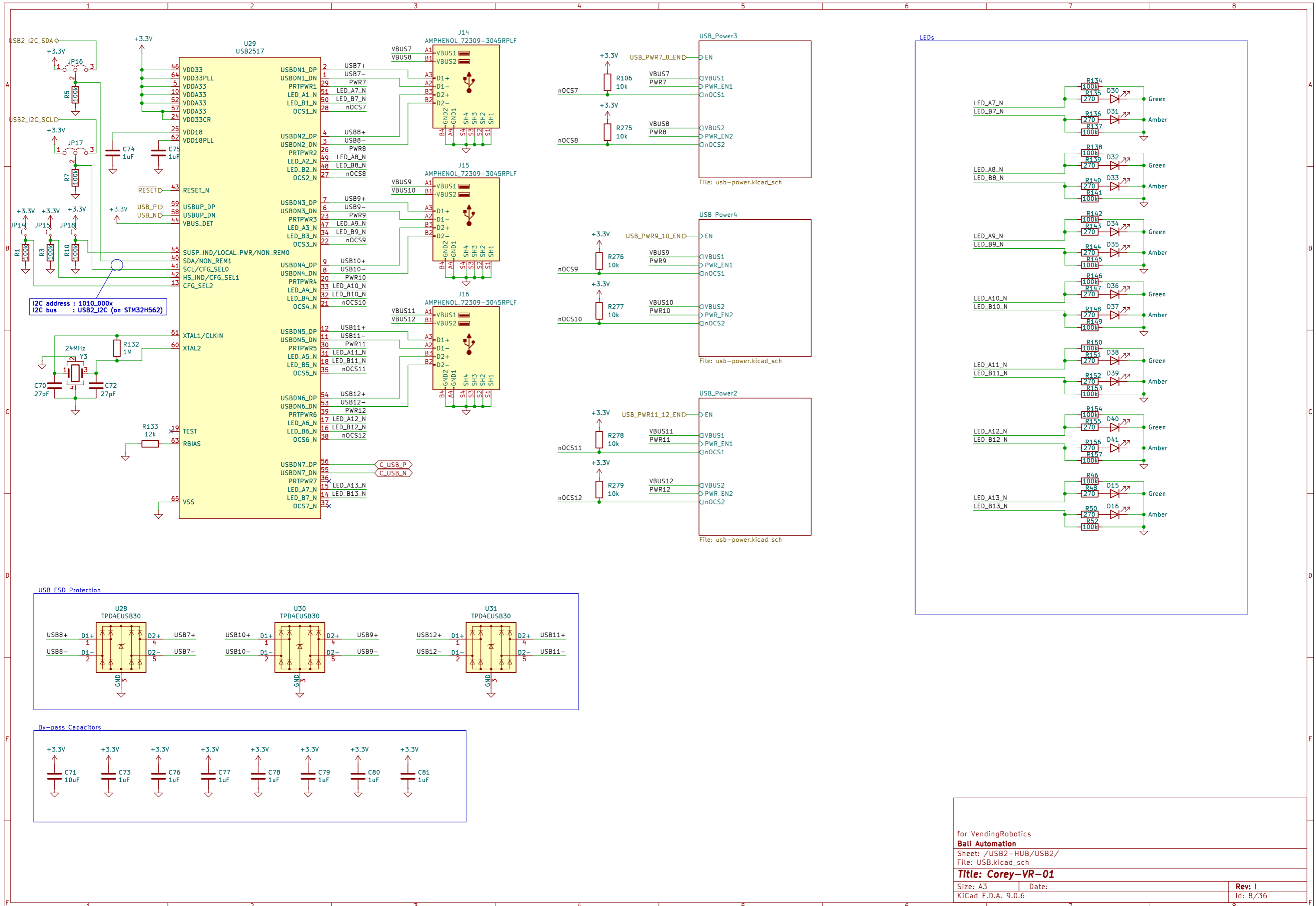
Add `force_eeprom_read=0` and `disable_poe_fan=1` to the config.txt file

- "CE"
- "ESD"
- "RoHS"
- "WEEE"

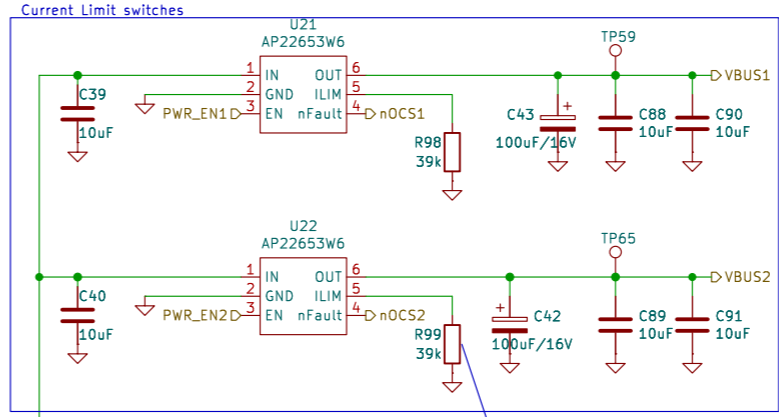
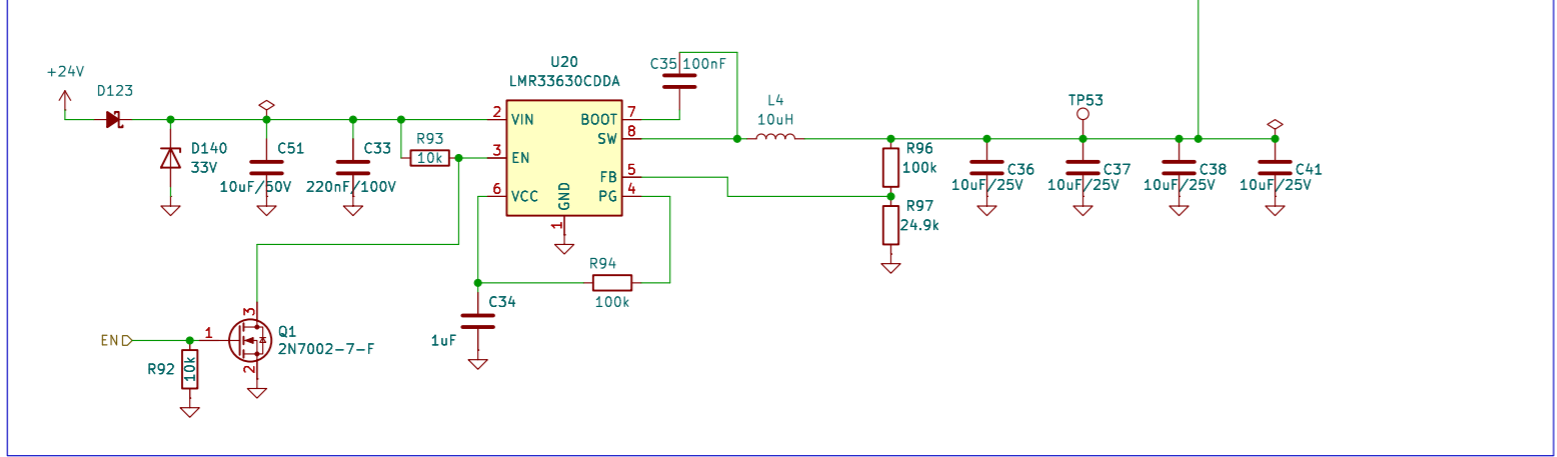
for VendingRobotics	
Bali Automation	
Sheet: /	
File: Corey-VR-01.kicad_sch	
Title: Corey-VR-01	
Size: A4	Date:
KiCad E.D.A. 9.0.6	Rev: 1
	Id: 1/36



for VendingRobotics
Bali Automation
 Sheet: /USB2-HUB/
 File: USB2-HUB.kicad_sch
Title: Corey-VR-01
 Size: A3 Date:
 KiCad E.D.A. 9.0.6 Rev: 1
Id: 2/36

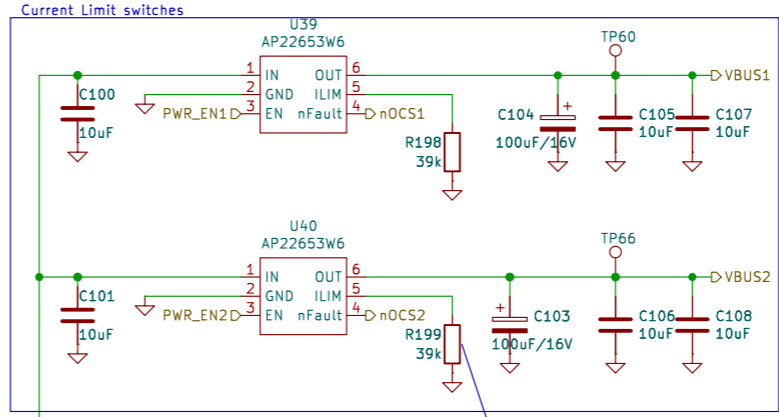
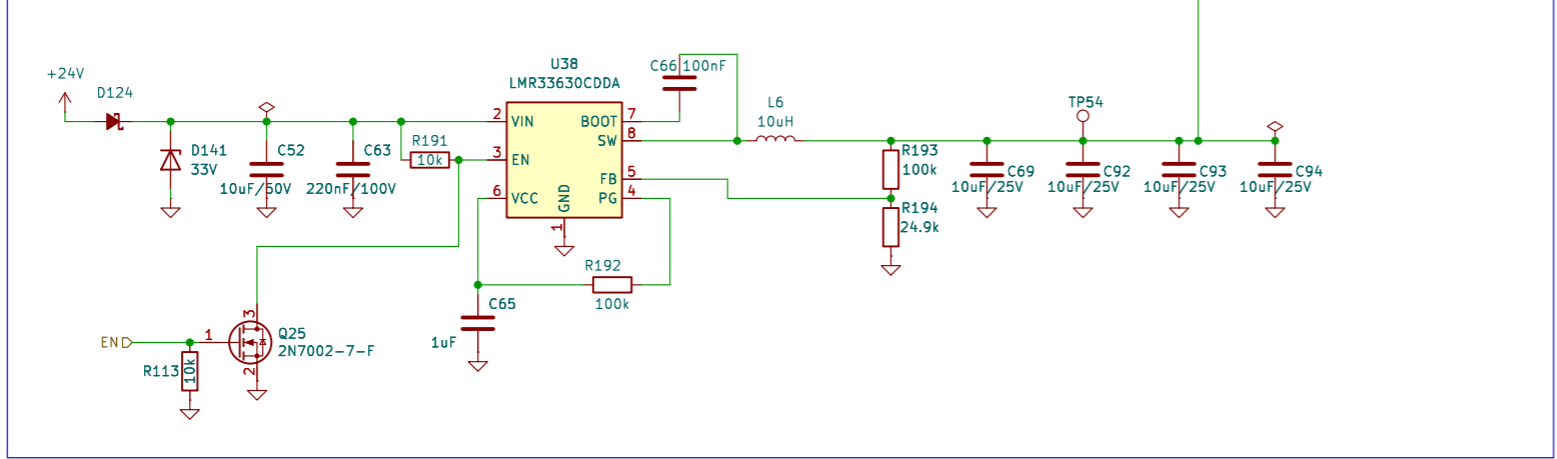


+5v/3A PSU (7-36V Input, max 30V Input @ +60°C)



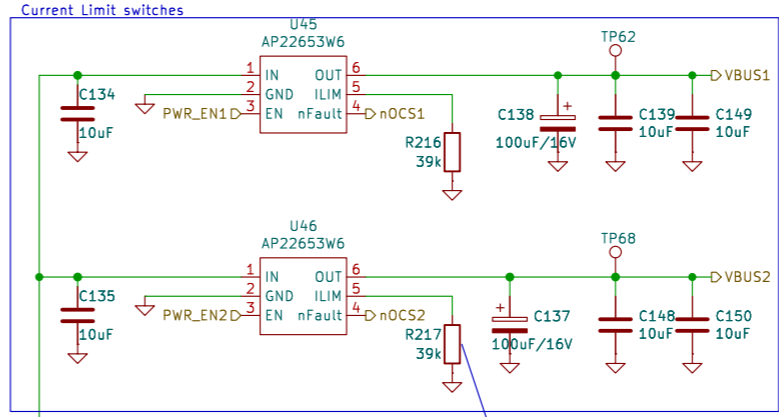
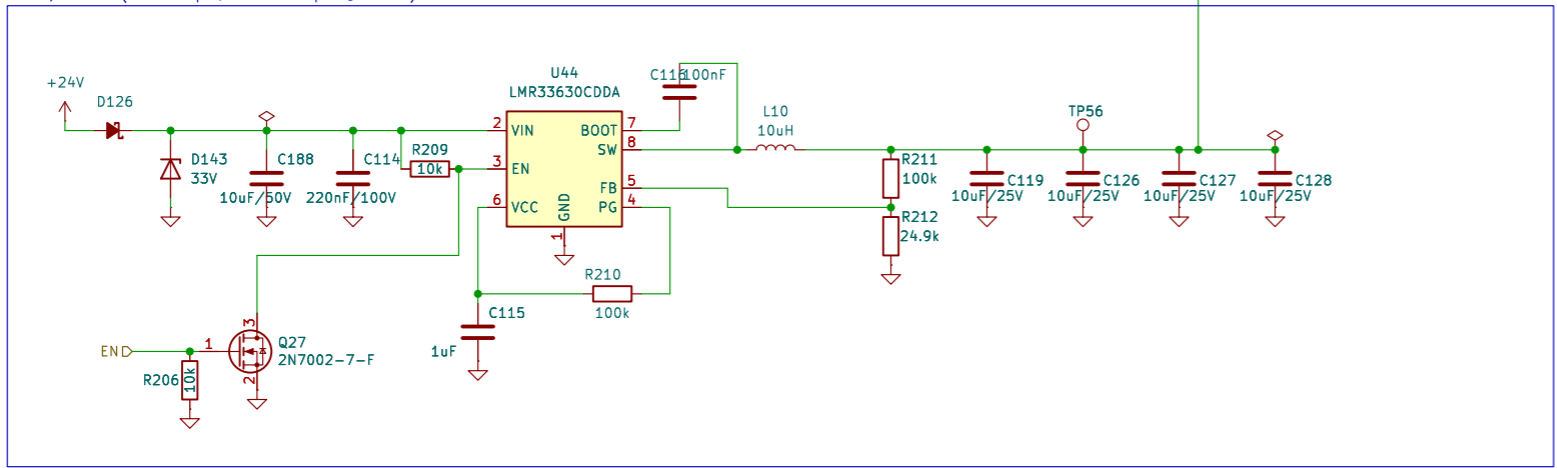
This resistor controls current limit.
 15k == 1.75 Amp
 33k == 0.76 Amp
 39k == 0.63 Amp
 USB spec only requires 500mA AFTER NEGOTIATION.
 What should we set it to?

+5v/3A PSU (7-36V Input, max 30V Input @ +60°C)



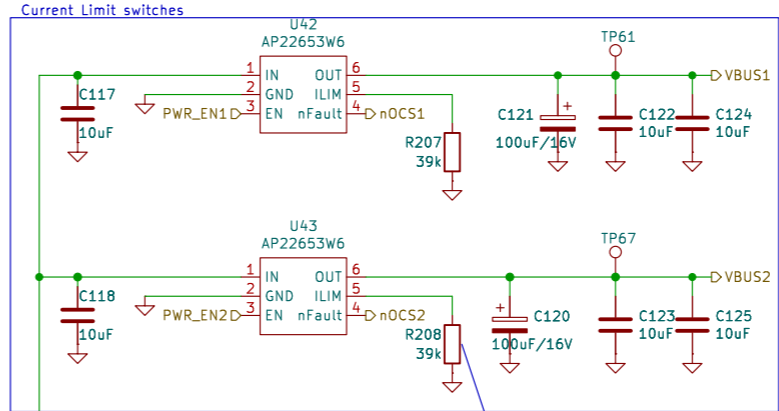
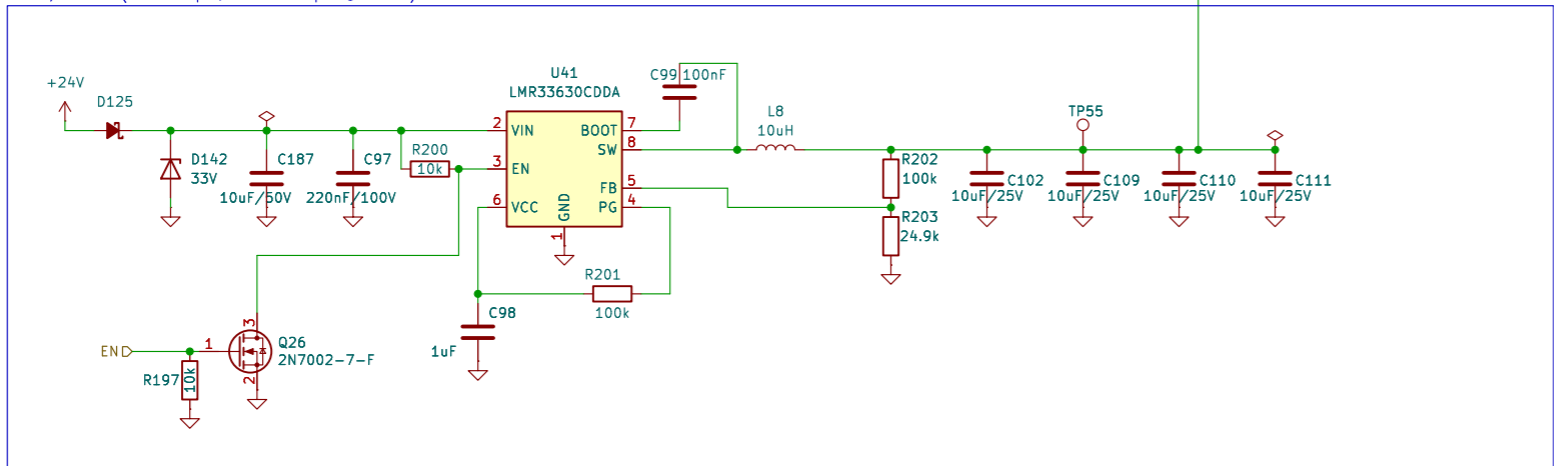
This resistor controls current limit.
 15k == 1.75 Amp
 33k == 0.76 Amp
 39k == 0.63 Amp
 USB spec only requires 500mA AFTER NEGOTIATION.
 What should we set it to?

+5v/3A PSU (7-36V Input, max 30V Input @ +60°C)



This resistor controls current limit.
 15k == 1.75 Amp
 33k == 0.76 Amp
 39k == 0.63 Amp
 USB spec only requires 500mA AFTER NEGOTIATION.
 What should we set it to?

+5v/3A PSU (7-36V Input, max 30V Input @ +60°C)



This resistor controls current limit.
 15k == 1.75 Amp
 33k == 0.76 Amp
 39k == 0.63 Amp
 USB spec only requires 500mA AFTER NEGOTIATION.
 What should we set it to?

for VendingRobotics

Bali Automation

Sheet: /USB2-HUB/USB_Power1/

File: usb-power.kicad_sch

Title: Corey-VR-01

Size: A3

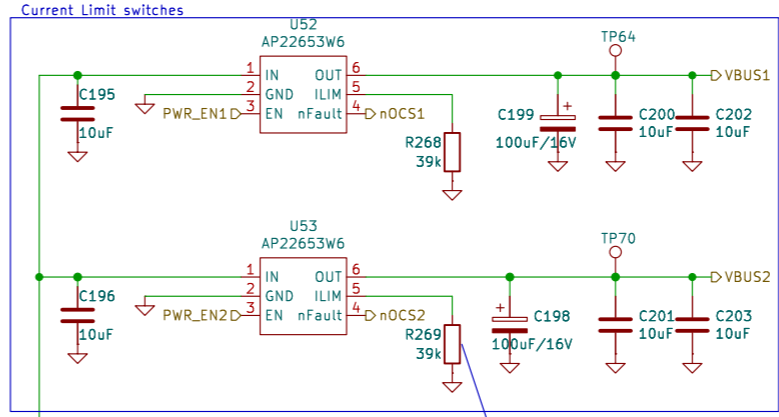
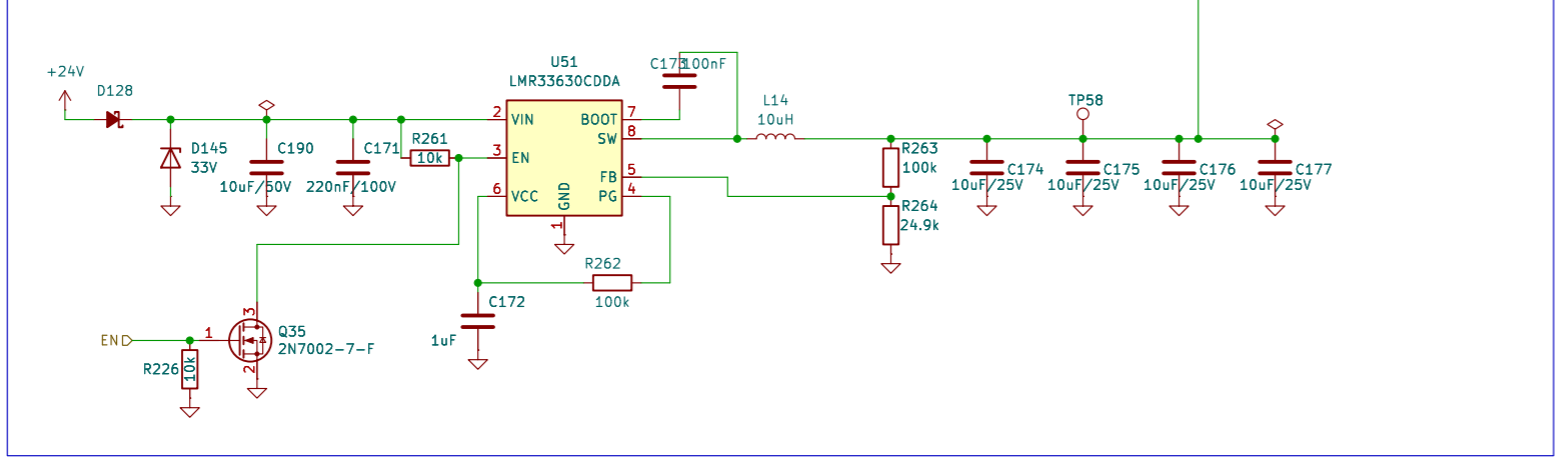
Date:

Rev: 1

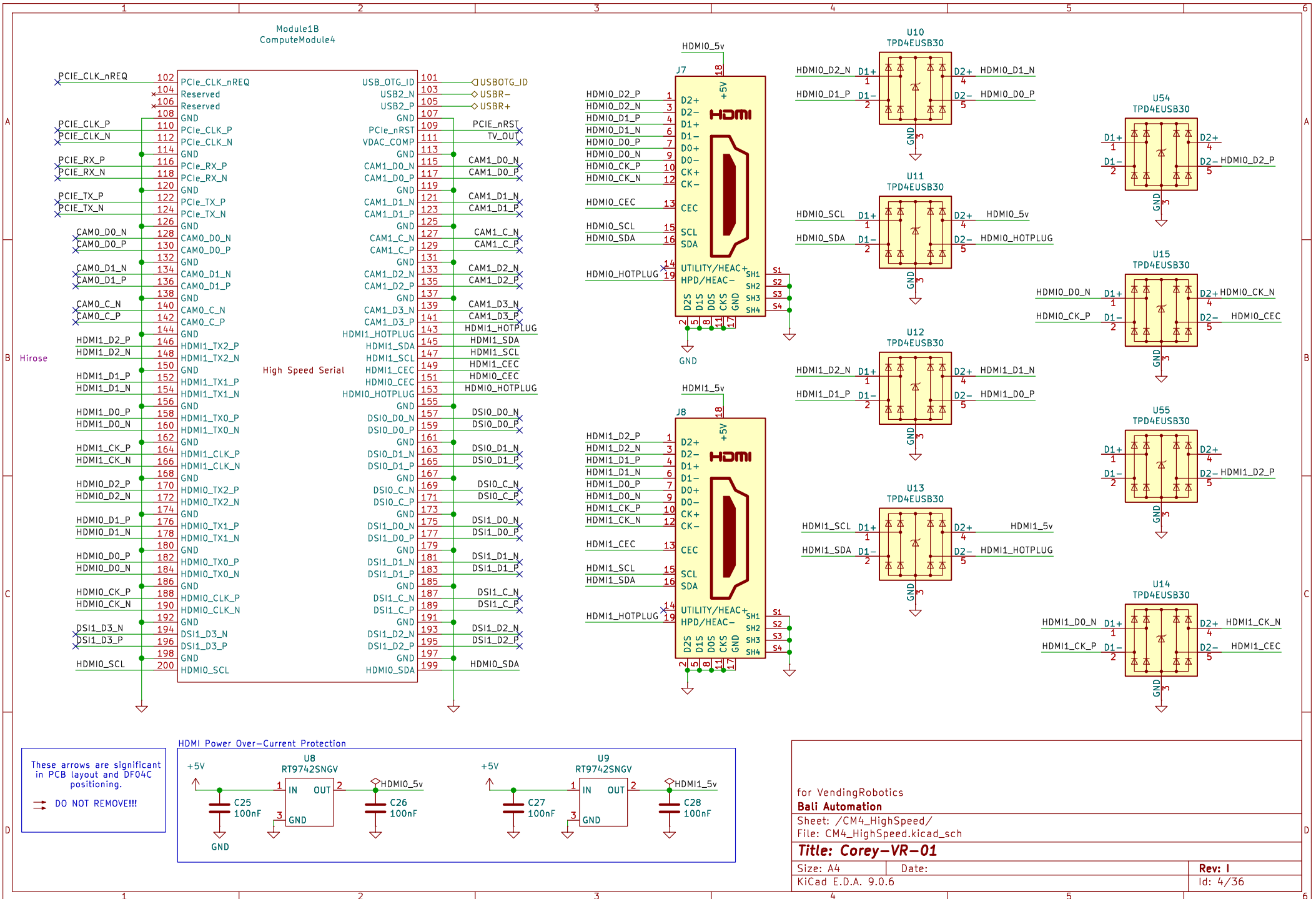
KiCad E.D.A. 9.0.6

Id: 18/36

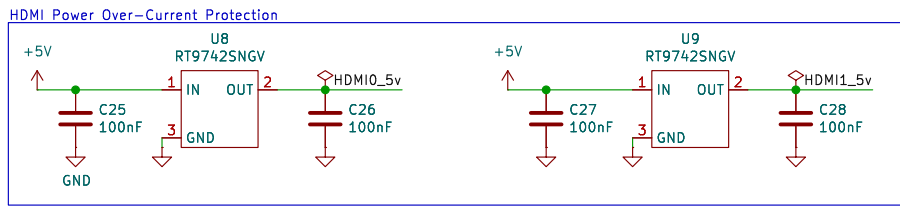
+5v/3A PSU (7-36V Input, max 30V Input @ +60°C)



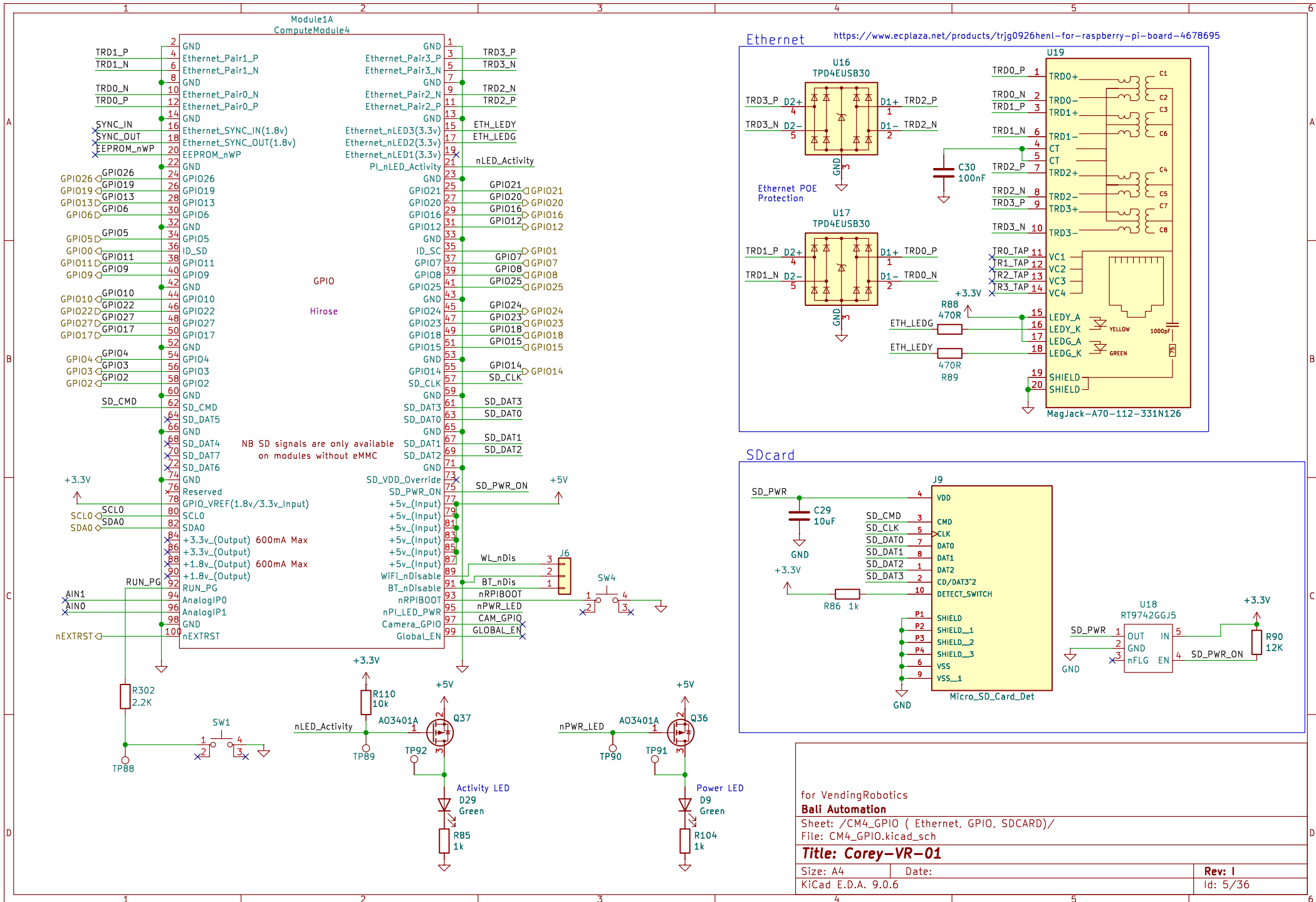
This resistor controls current limit.
 15k == 1.75 Amp
 33k == 0.76 Amp
 39k == 0.63 Amp
 USB spec only requires 500mA AFTER NEGOTIATION.
 What should we set it to?

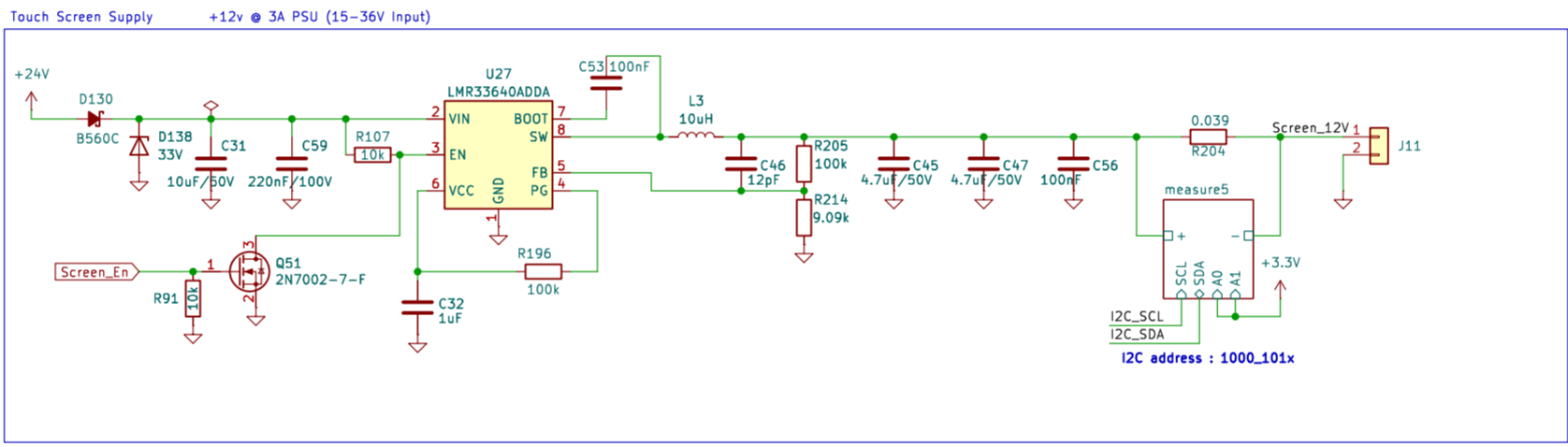
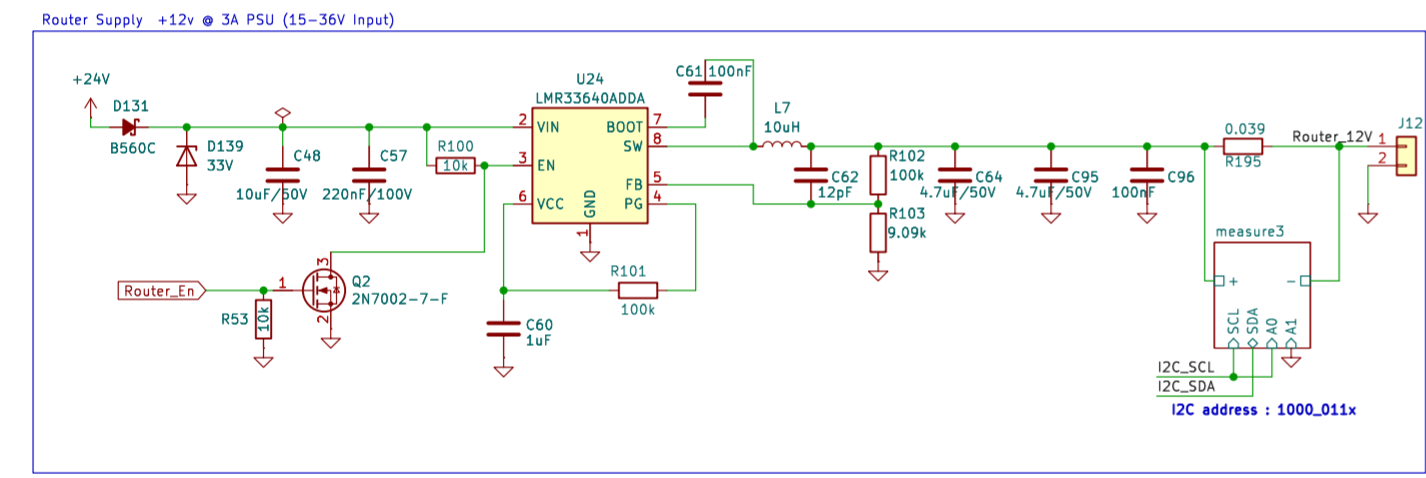
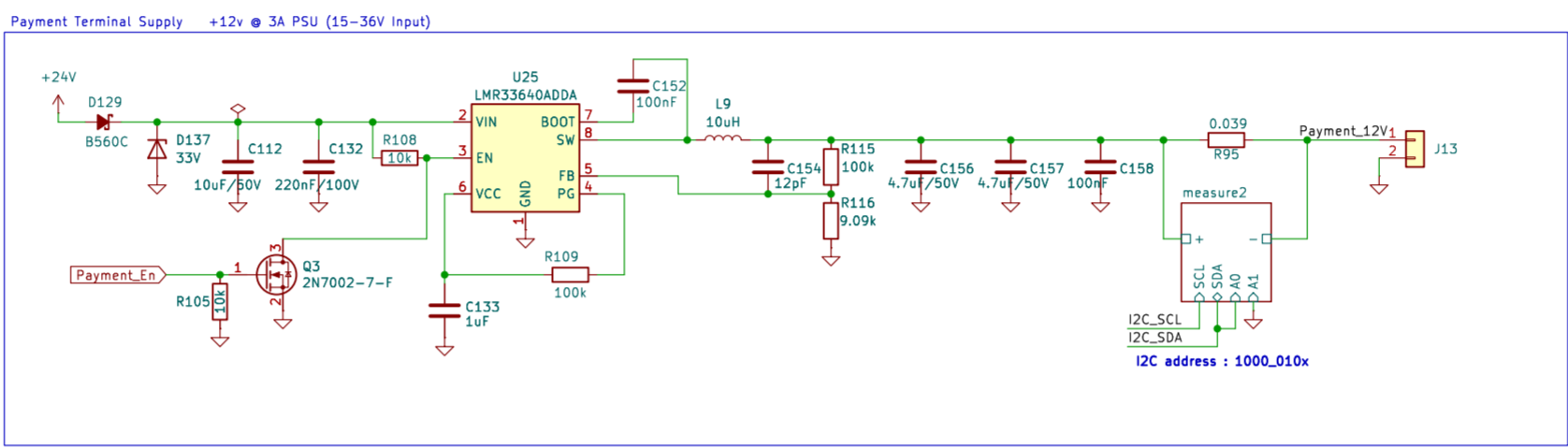
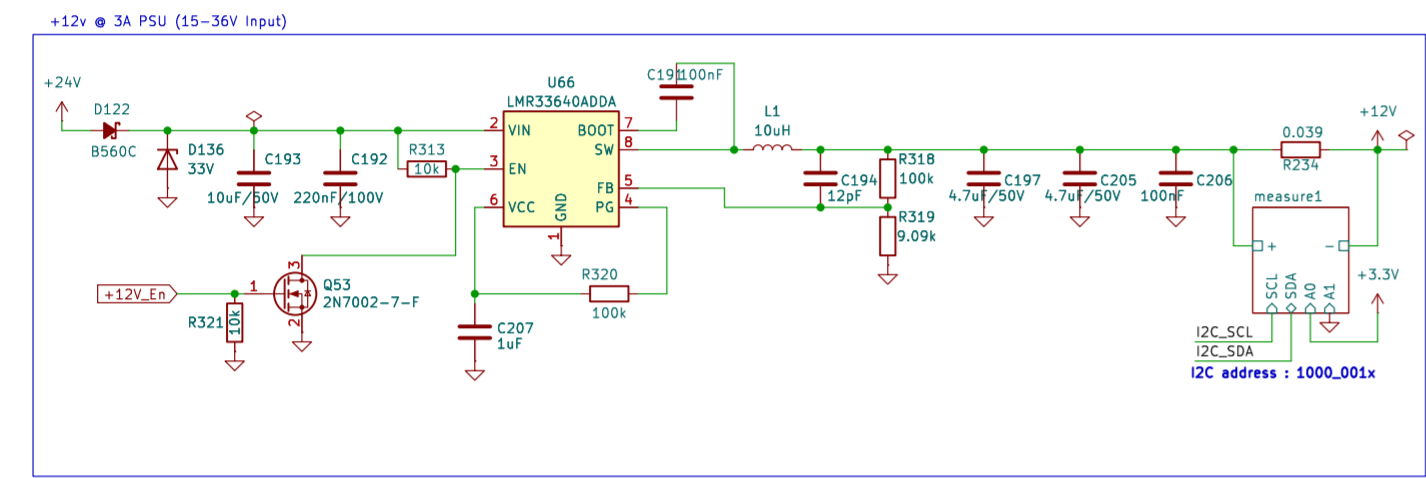
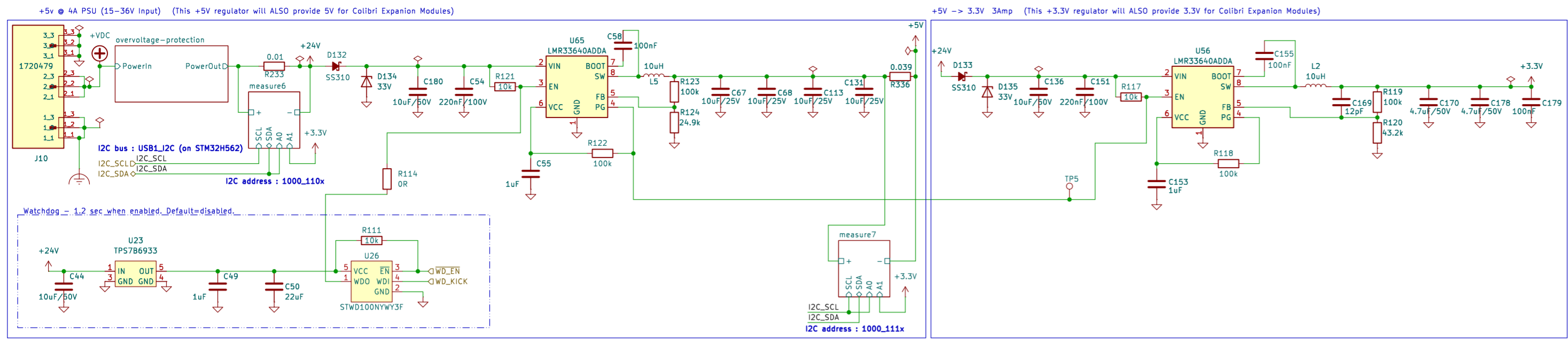


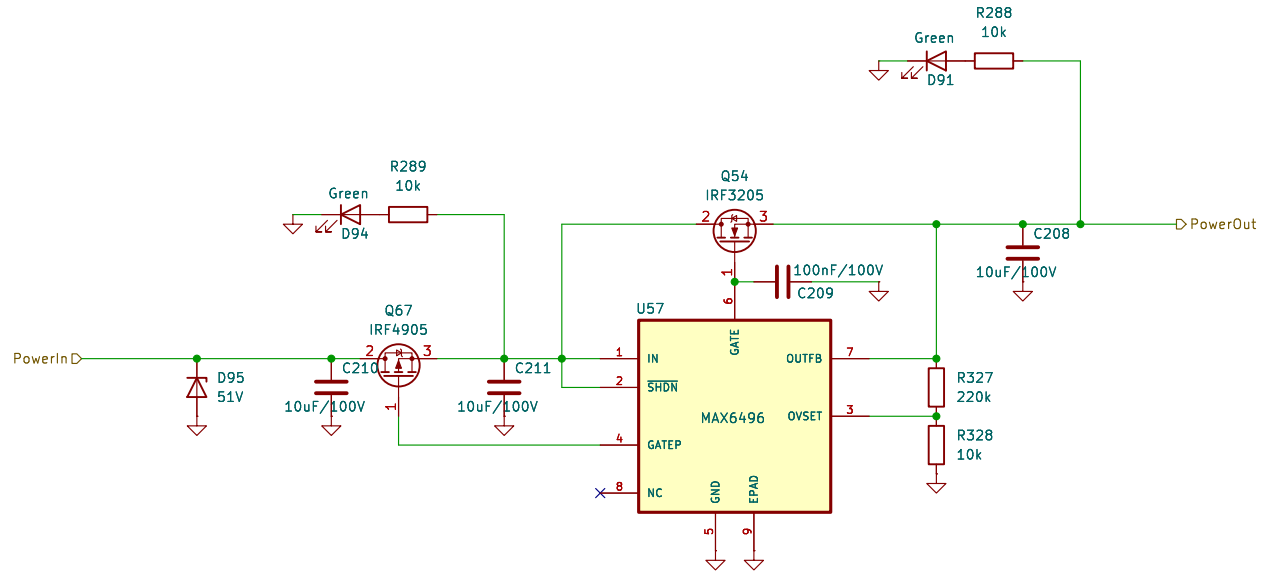
These arrows are significant in PCB layout and DF04C positioning.
 ⇨ DO NOT REMOVE!!!



for VendingRobotics
Bali Automation
 Sheet: /CM4_HighSpeed/
 File: CM4_HighSpeed.kicad_sch
Title: Corey-VR-01
 Size: A4 Date: _____
 KiCad E.D.A. 9.0.6 Rev: 1
 Id: 4/36







for VendingRobotics

Bali Automation

Sheet: /PSUs/overvoltage-protection/

File: overvoltage-protection.kicad_sch

Title: Corey-VR-01

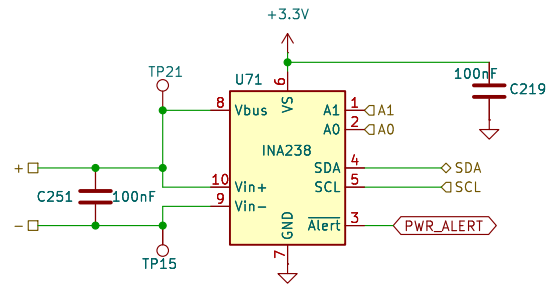
Size: A4

Date:

Rev: 1

KiCad E.D.A. 9.0.6

Id: 29/36



for VendingRobotics

Bali Automation

Sheet: /PSUs/measure2/

File: measure.kicad_sch

Title: Corey-VR-01

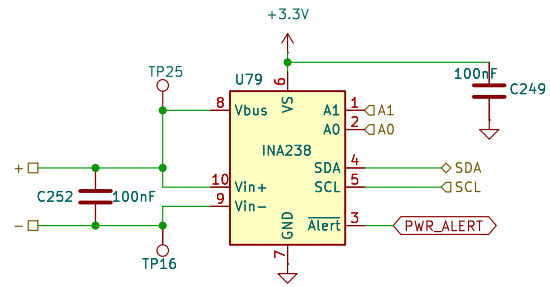
Size: A4

Date:

Rev: 1

KiCad E.D.A. 9.0.6

Id: 31/36



for VendingRobotics

Bali Automation

Sheet: /PSUs/measure6/

File: measure.kicad_sch

Title: Corey-VR-01

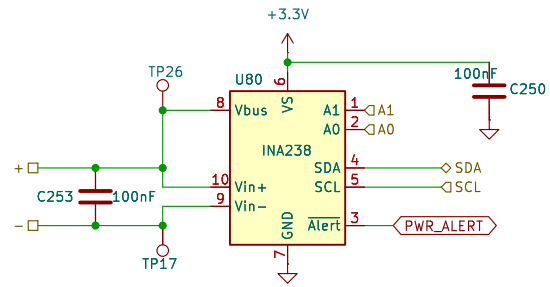
Size: A4

Date:

Rev: 1

KiCad E.D.A. 9.0.6

Id: 32/36



for VendingRobotics

Bali Automation

Sheet: /PSUs/measure1/

File: measure.kicad_sch

Title: Corey-VR-01

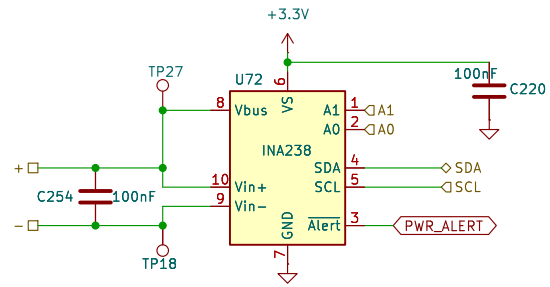
Size: A4

Date:

KiCad E.D.A. 9.0.6

Rev: 1

Id: 33/36



for VendingRobotics

Bali Automation

Sheet: /PSUs/measure5/

File: measure.kicad_sch

Title: Corey-VR-01

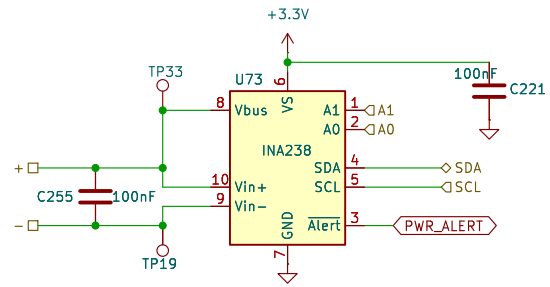
Size: A4

Date:

Rev: 1

KiCad E.D.A. 9.0.6

Id: 34/36



for VendingRobotics

Bali Automation

Sheet: /PSUs/measure3/

File: measure.kicad_sch

Title: Corey-VR-01

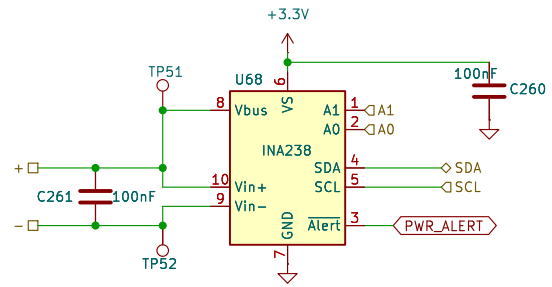
Size: A4

Date:

Rev: 1

KiCad E.D.A. 9.0.6

Id: 35/36



for VendingRobotics

Bali Automation

Sheet: /PSUs/measure7/

File: measure.kicad_sch

Title: Corey-VR-01

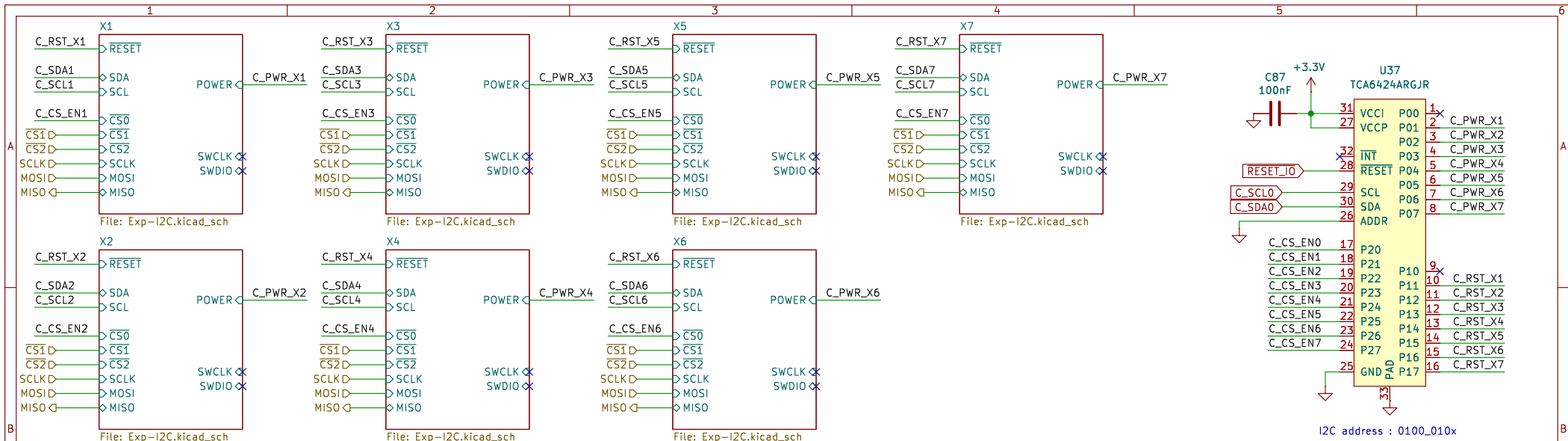
Size: A4

Date:

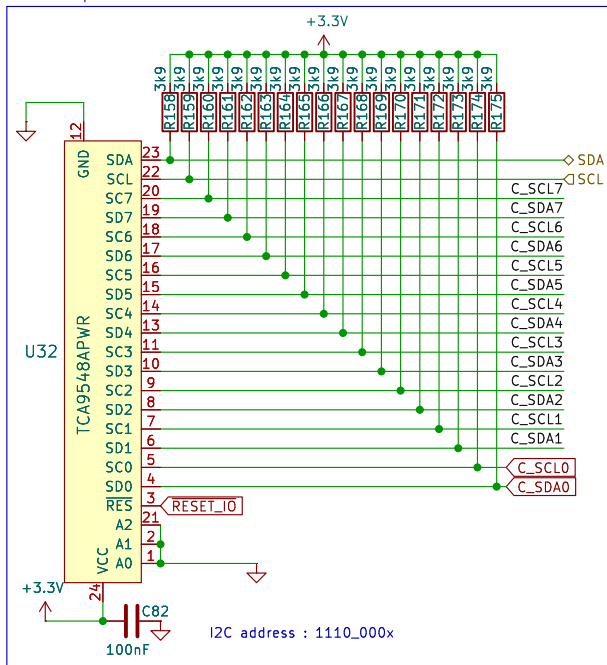
KiCad E.D.A. 9.0.6

Rev: 1

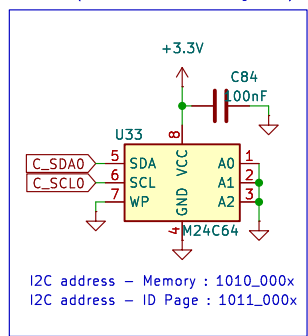
Id: 36/36



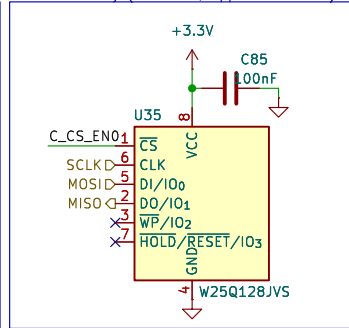
I2C Multiplexer



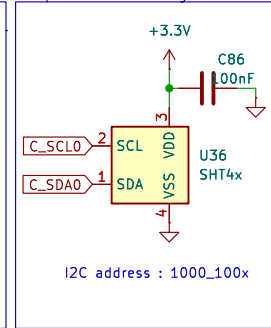
EEPROM (64kbits, manufacturing data)



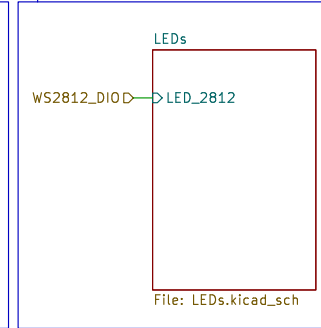
Flash Memory (128Mbits, application data)



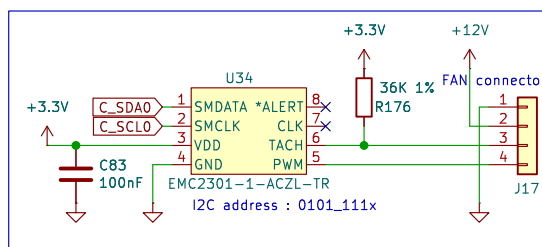
Temperature Monitoring



Expansion LED Status



FAN controller



for VendingRobotics

Bali Automation

Sheet: /Colibri Subsystem/IO Expansion/

File: IO-Expansion.kicad_sch

Title: Corey-VR-01

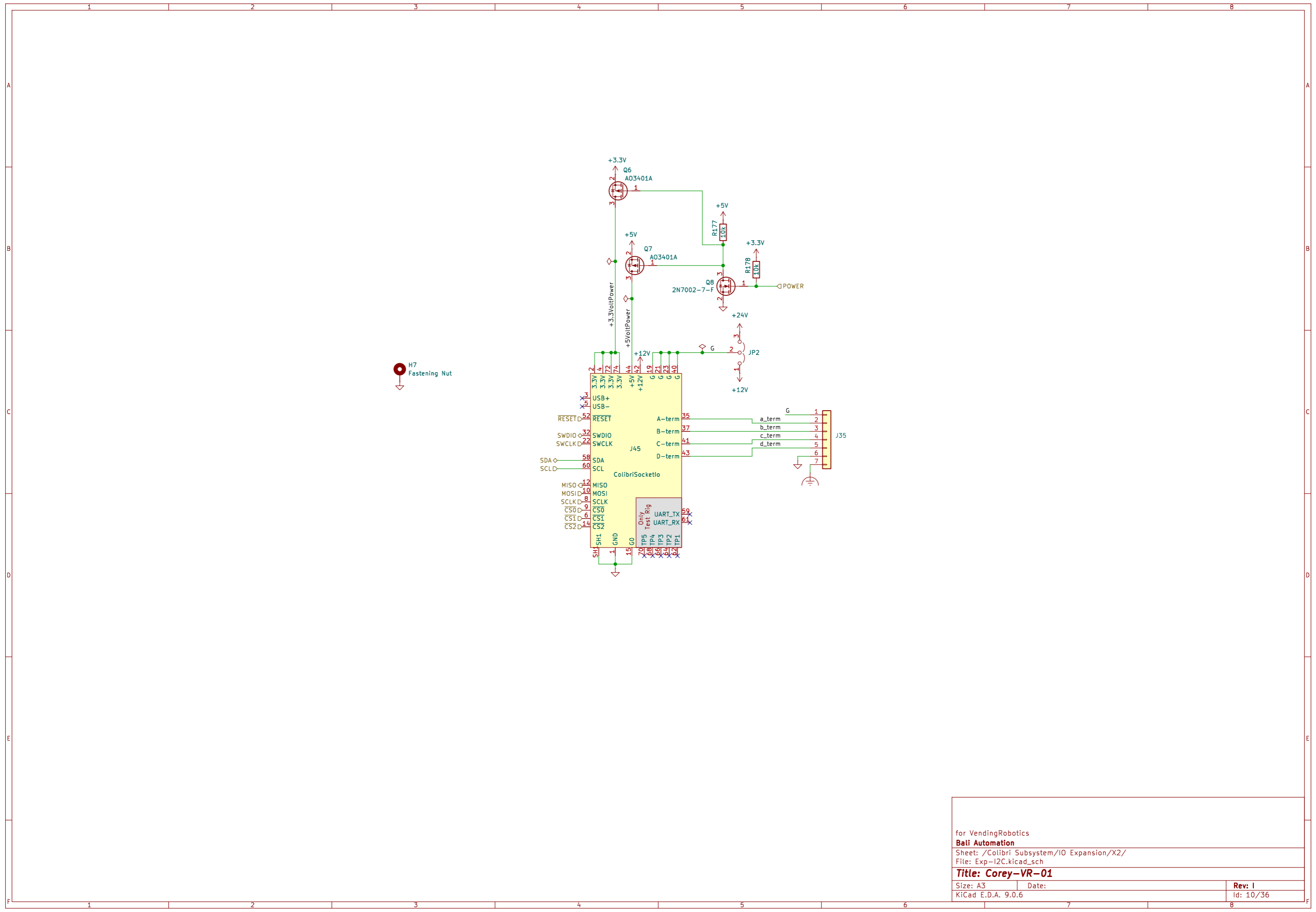
Size: A4

Date:

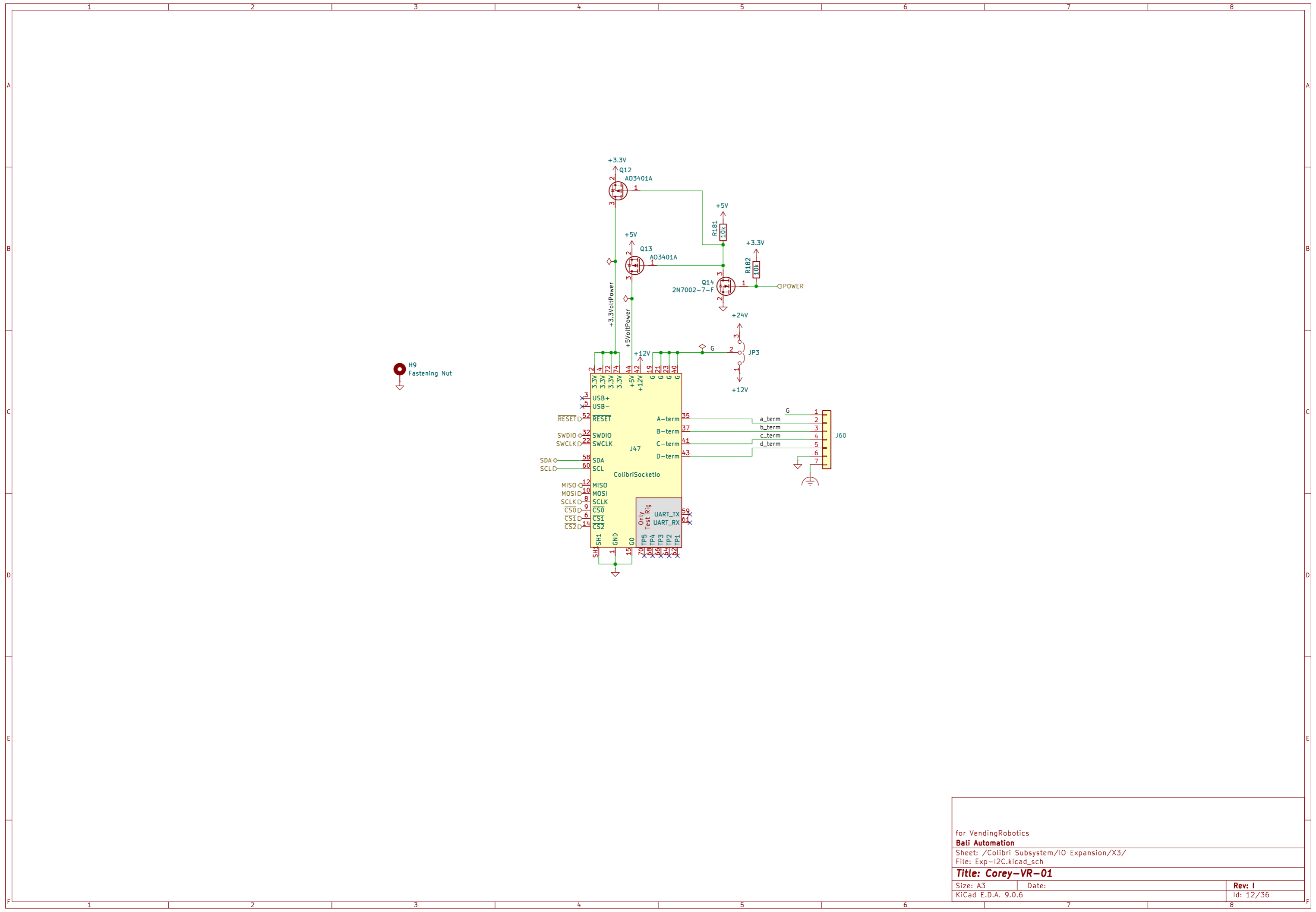
KiCad E.D.A. 9.0.6

Rev: 1

Id: 9/36



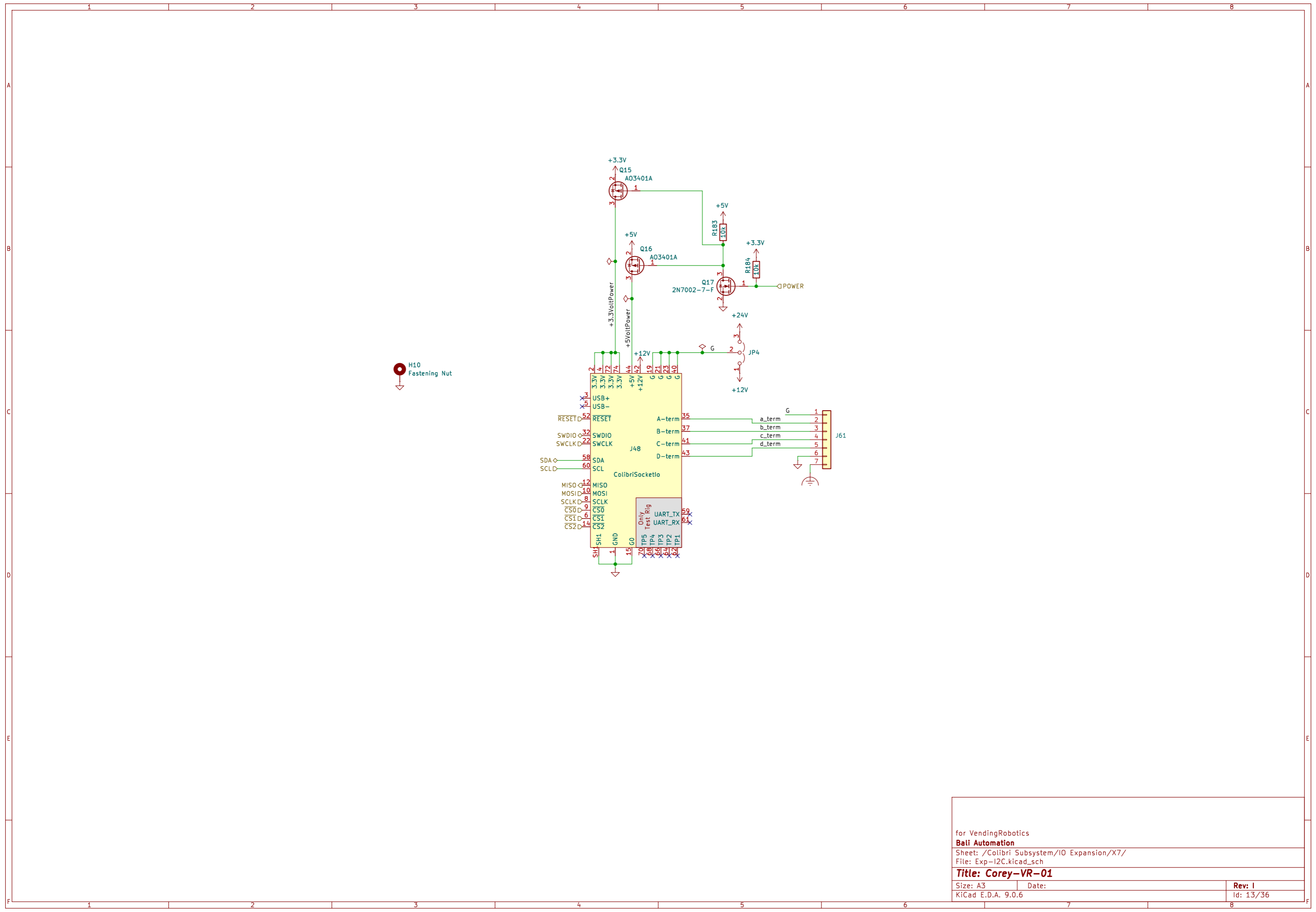
for VendingRobotics
Bali Automation
 Sheet: /Colibri Subsystem/IO Expansion/X2/
 File: Exp-I2C.kicad_sch
Title: Corey-VR-01
 Size: A3 Date:
 KiCad E.D.A. 9.0.6 **Rev: 1**
 Id: 10/36



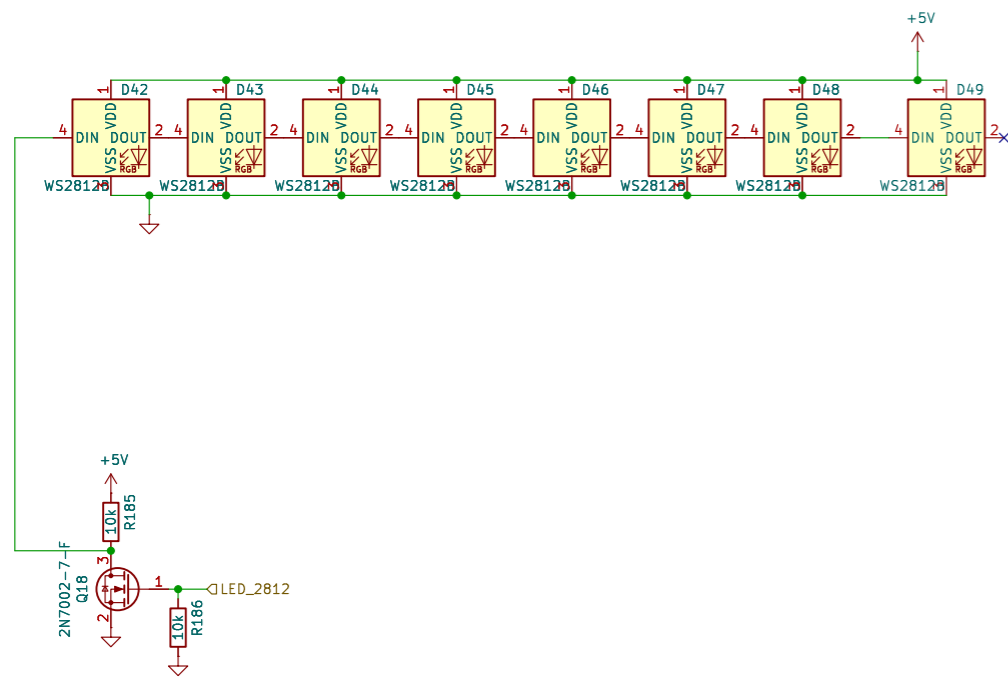
H9
Fastening Nut

for VendingRobotics
Bali Automation
 Sheet: /Colibri Subsystem/IO Expansion/X3/
 File: Exp-I2C.kicad_sch

Title: Corey-VR-01		
Size: A3	Date:	Rev: 1
KiCad E.D.A. 9.0.6		Id: 12/36



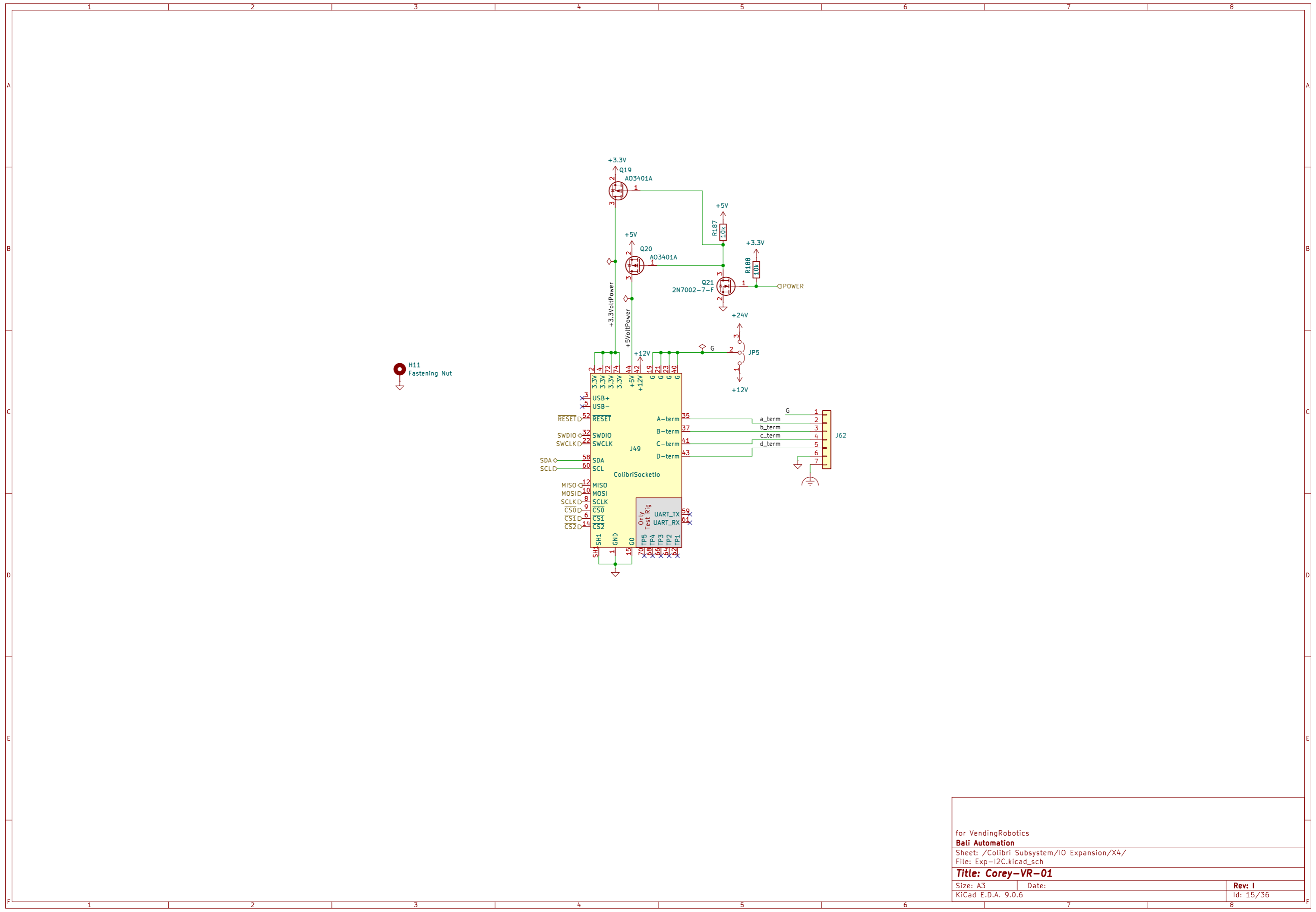
for VendingRobotics
Bali Automation
 Sheet: /Colibri Subsystem/IO Expansion/X7/
 File: Exp-I2C.kicad_sch
Title: Corey-VR-01
 Size: A3 Date:
 KiCad E.D.A. 9.0.6 **Rev: 1**
 Id: 13/36



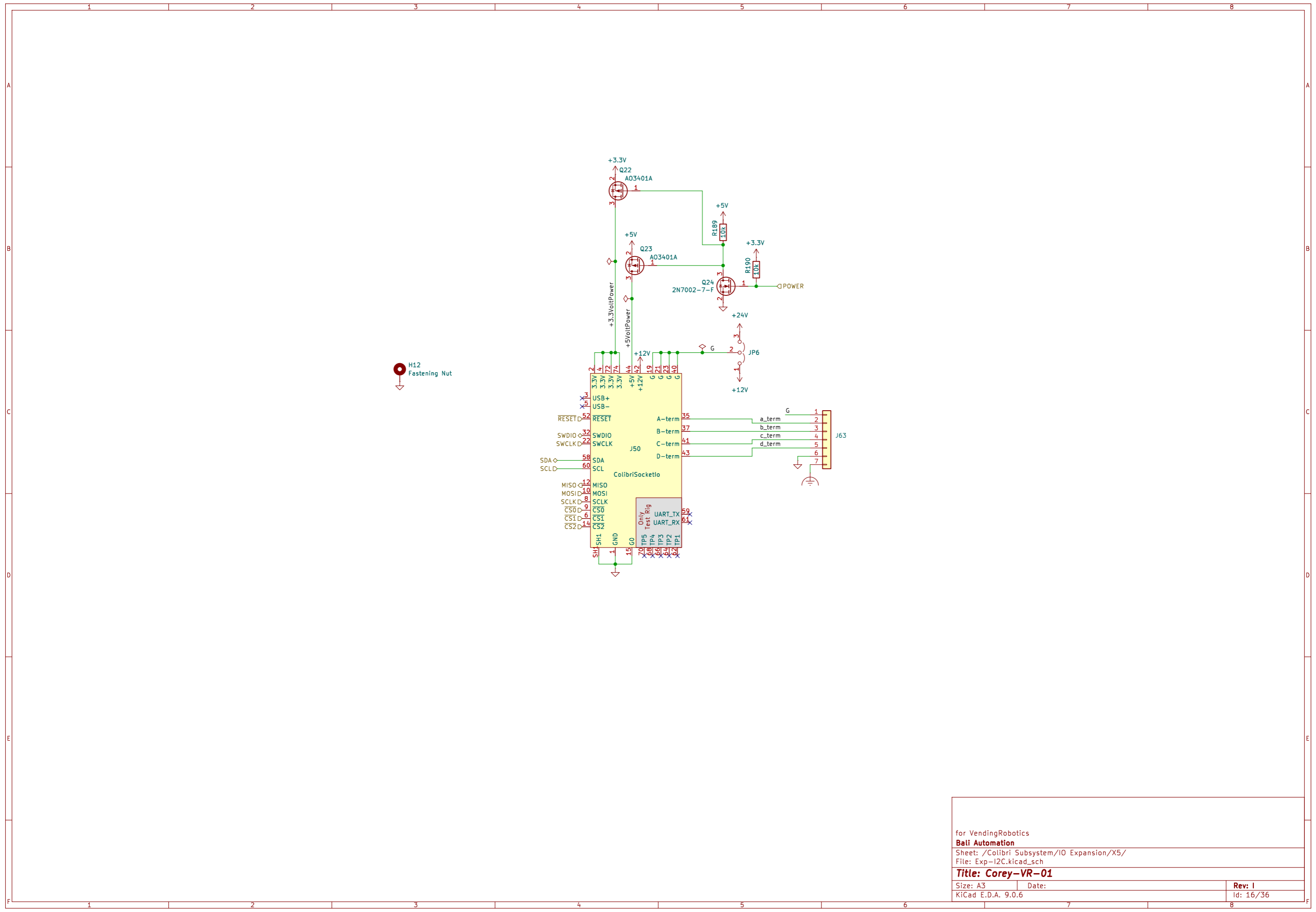
for VendingRobotics
Bali Automation
 Sheet: /Colibri Subsystem/IO Expansion/LEDs/
 File: LEDs.kicad_sch

Title: Corey-VR-01

Size: A3	Date:	Rev: 1
KiCad E.D.A. 9.0.6		Id: 14/36



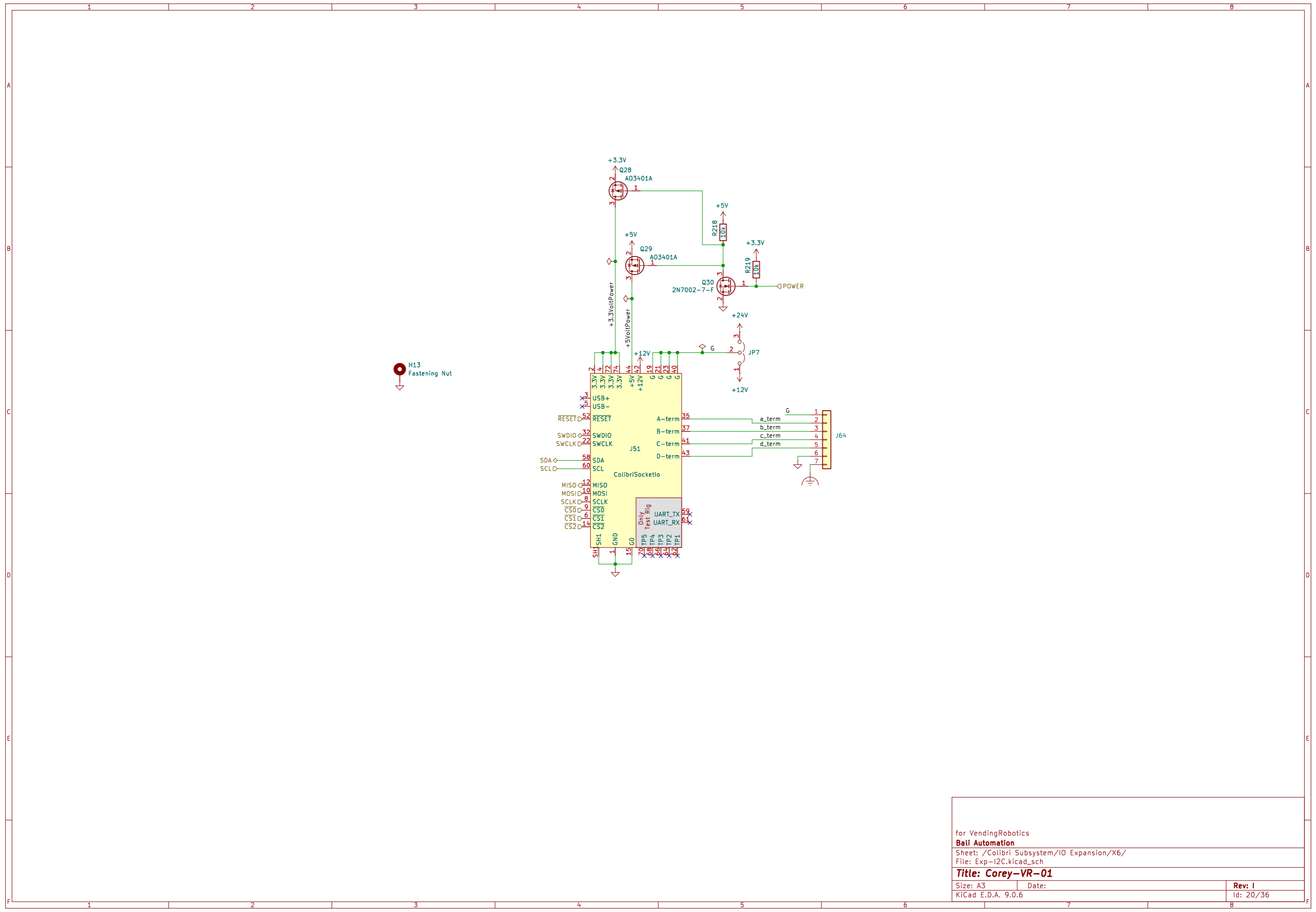
for VendingRobotics
Bali Automation
 Sheet: /Colibri Subsystem/IO Expansion/X4/
 File: Exp-I2C.kicad_sch
Title: Corey-VR-01
 Size: A3 Date:
 KiCad E.D.A. 9.0.6 **Rev: 1**
 Id: 15/36



H12
Fastening Nut

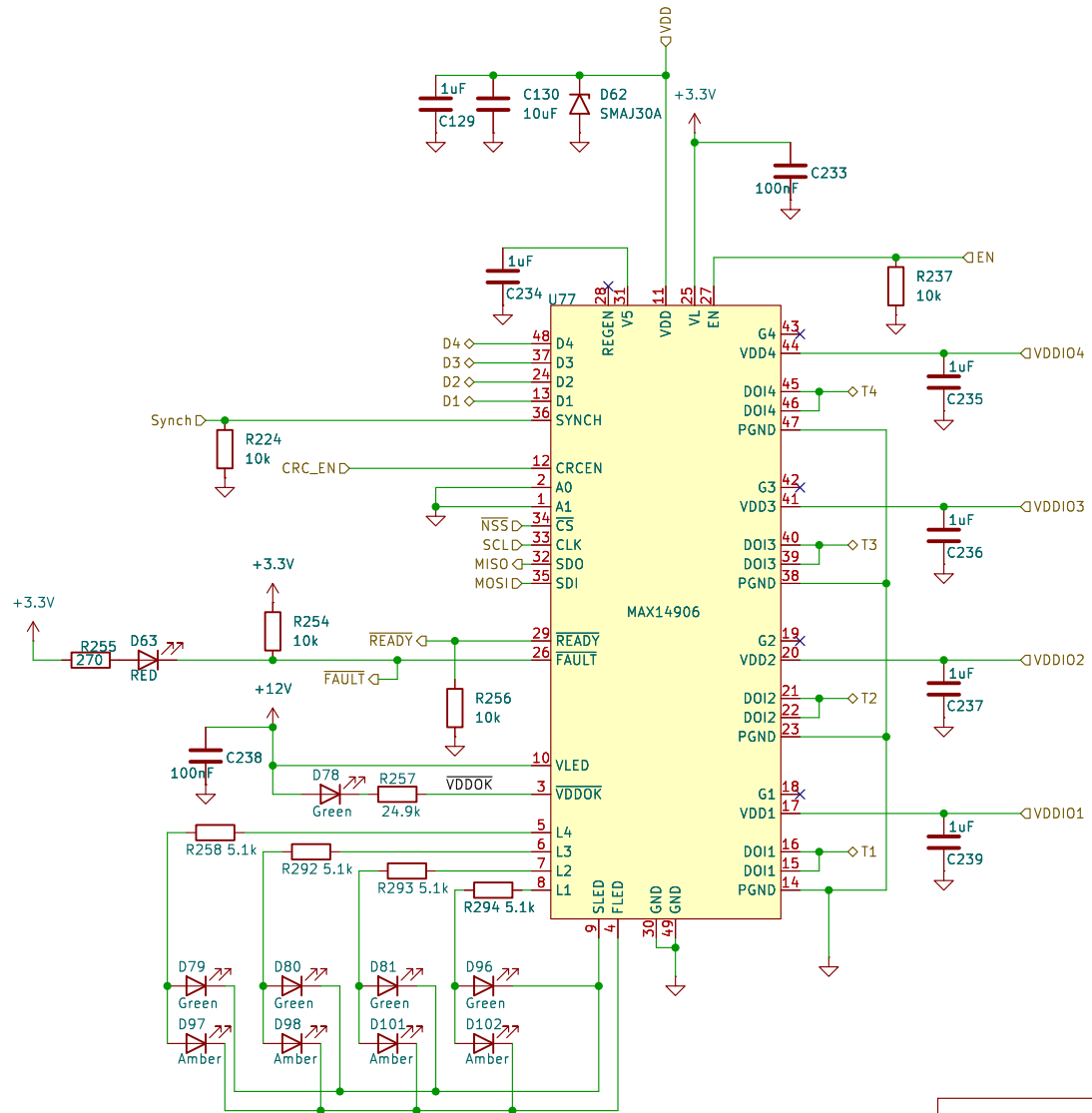
for VendingRobotics
Bali Automation
 Sheet: /Colibri Subsystem/IO Expansion/X5/
 File: Exp-I2C.kicad_sch

Title: Corey-VR-01		
Size: A3	Date:	Rev: 1
KiCad E.D.A. 9.0.6		Id: 16/36



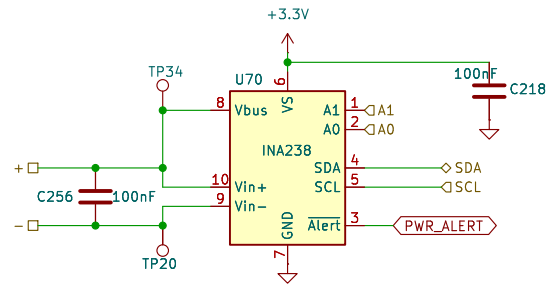
H13
Fastening Nut

for VendingRobotics
Bali Automation
 Sheet: /Colibri Subsystem/IO Expansion/X6/
 File: Exp-I2C.kicad_sch
Title: Corey-VR-01
 Size: A3 Date:
 KiCad E.D.A. 9.0.6 **Rev: 1**
 Id: 20/36



for VendingRobotics
Bali Automation
 Sheet: /Carousel Controller/DIO2/
 File: dio.kicad_sch
Title: Corey-VR-01

Size: A4	Date:
KiCad E.D.A. 9.0.6	Rev: 1
	Id: 26/36



for VendingRobotics

Bali Automation

Sheet: /Carousel Controller/measure0/

File: measure.kicad_sch

Title: Corey-VR-01

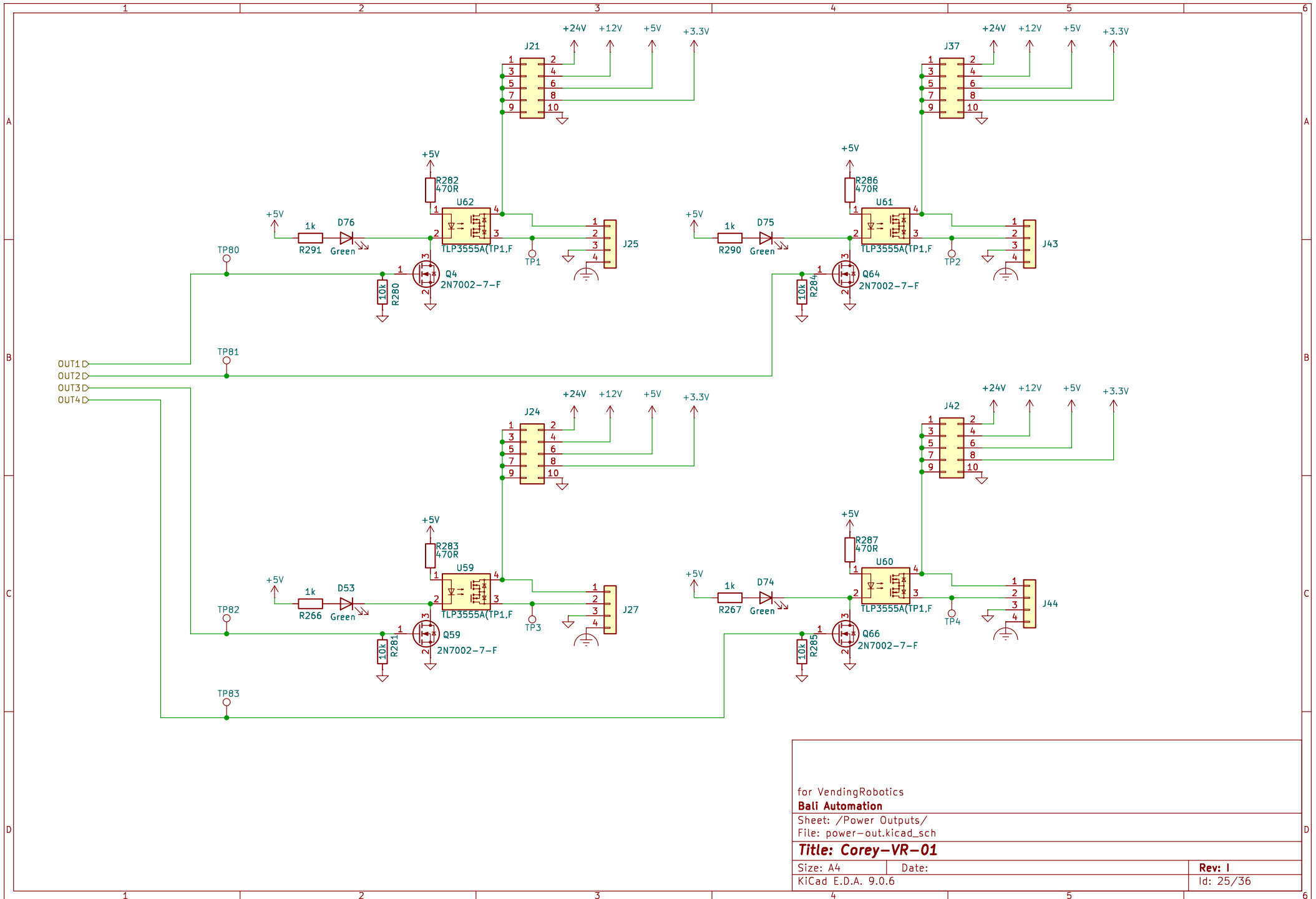
Size: A4

Date:

Rev: 1

KiCad E.D.A. 9.0.6

Id: 37/36



for VendingRobotics

Bali Automation

Sheet: /Power Outputs/

File: power-out.kicad_sch

Title: Corey-VR-01

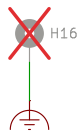
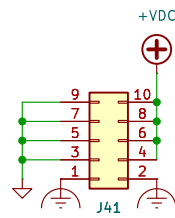
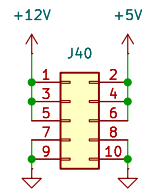
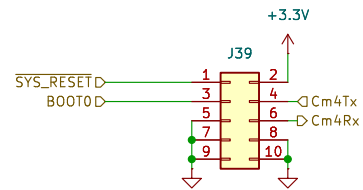
Size: A4

Date:

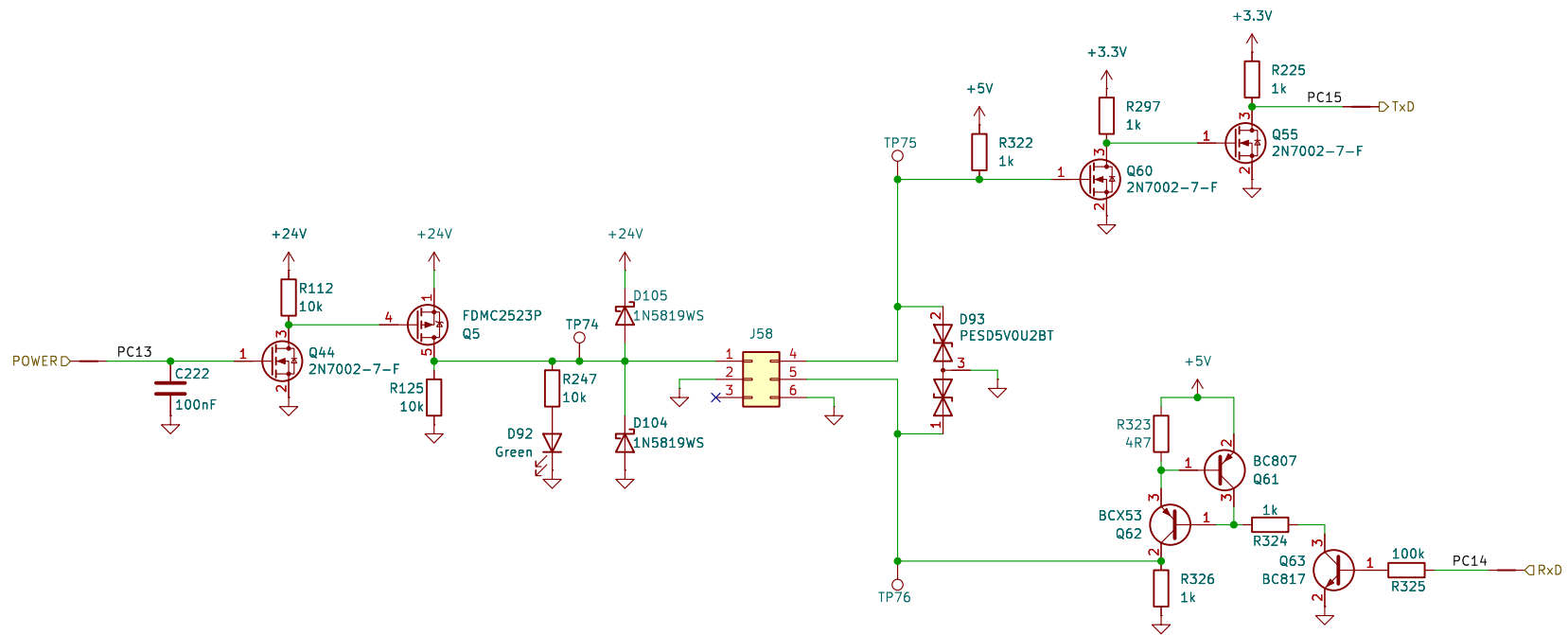
KiCad E.D.A. 9.0.6

Rev: 1

Id: 25/36



for VendingRobotics	
Bali Automation	
Sheet: /Carousel2/	
File: carousel2_option.kicad_sch	
Title: Corey-VR-01	
Size: A4	Date:
KiCad E.D.A. 9.0.6	Rev: 1
	Id: 27/36



for VendingRobotics

Bali Automation

Sheet: /MDB-connect/

File: mdb-connect.kicad_sch

Title: Corey-VR-01

Size: A4

Date:

Rev: 1

KiCad E.D.A. 9.0.6

Id: 28/36